

FreeStyle Libre[®] 2 Sensors Discontinuation: Actions required

FreeStyle Libre[®] 2 sensors are being discontinued by Abbott and replaced with FreeStyle Libre[®] 2 **Plus** sensors. Stocks of FreeStyle Libre[®] 2 sensors are expected to be exhausted by mid- 2025. Action is required to ensure continuity of care, for patients currently prescribed FreeStyle Libre[®] 2 sensors.

It is recommended that practices:

- Update prescribing systems (VISION/EMIS) to support with appropriate prescribing (see [Appendix 2](#))
- Update prescribing, of existing patients, to FreeStyle Libre[®] 2 Plus Sensors
- Counsel patients on the change

For further information relating to the change, see Healthcare Professional FAQs in [Appendix 1](#).

Actions for practice teams

Update practice systems to support with prescribing:

Practice systems should be updated to ensure FreeStyle Libre[®] 2 Plus sensors are listed as formulary items (see [Appendix 2](#) for details of how to update VISION and EMIS).

At the next opportunity e.g. repeat request/diabetes review counsel patients on then change and update repeat prescription records:

Patients should be provided with information on the change ([Appendix 3](#)) and counselled on the following points.

- Use any existing FreeStyle Libre[®] 2 sensors they have prior to using any new 2 Plus sensors.
- Sensor wear is now 15 days (versus 14 days with FreeStyle Libre[®] 2).
- The FreeStyle LibreLink[®] app and the FreeStyle Libre[®] 2 reader work with the new sensor; no app updates or change of reader are required.

Quantities of FreeStyle Libre 2 Sensors should reflection a length of use of 15 days and practices normal repeat prescribing frequency e.g.:

- 2 sensors = 30 days / 1 month supply
- 4 sensors = 60 days / 2 months supply

To ensure continuity of care and supplies changes are recommended to be actioned by May 2025.

Liaise with community pharmacies to advise of the change and action being taken.

This information has been produced by the NHS Grampian Medicines Management Team following engagement with the diabetes specialist service.

Appendix 1

Healthcare Teams - Frequently Asked Questions: Changing from Freestyle Libre® 2 to FreeStyle Libre® 2 Plus sensors

Indications for use/Background

In NHS Grampian, primary care prescribing of continuous glucose monitors (CGM) must only be undertaken on the recommendation from the appropriate diabetes specialist service (adults or paediatrics). This should be in line with [Use of Continuous Glucose Monitors \(CGM\) on prescription within NHS Grampian Position Statement August 2024](#).

Abbott have introduced the FreeStyle Libre® 2 Plus Sensor, replacing their FreeStyle Libre® 2 Sensor. This is a company decision, as they continue to advance and develop continuous glucose monitoring systems.

What are the differences between the FreeStyle Libre® 2 sensor and the FreeStyle Libre® 2 Plus sensor?

	FreeStyle Libre® 2 Plus sensor	FreeStyle Libre® 2 sensor
Length of wear	Extended use and should be worn for 15 days	Worn for 14 days
Age indications	Use in children 2 years and older (when recommended by an appropriate specialist service)	Use in children 4 years and older
Accuracy*	Enhanced accuracy (versus Libre2) across multiple measures that provides dependable clinical performance	
Compatibility with insulin pumps	Compatible with Omnipod® 5 Automated Insulin Delivery System	

*finger pricks are still required if glucose readings and alarms do not match symptoms or expectations.

Does the patient require a new reader to scan the FreeStyle Libre® 2 Plus sensor?

No.

The new sensor is compatible with the current FreeStyle LibreLink® app and the FreeStyle Libre® 2 reader. However, patients choose which of these devices they want to receive alarms and they must start their FreeStyle Libre® 2 Plus sensor with that selected device. Once the patient scans their FreeStyle Libre® 2 Plus sensor with that device, they can receive alarms only on that device.

Many patients choose to use the free FreeStyle LibreLink® app to receive real-time glucose readings sent directly to their smartphone. These patients can continue to use their app with the new sensors; they do not need to download a new app.

Existing patients using the FreeStyle Libre® 2 system that do not have a compatible phone to download the FreeStyle LibreLink® app can continue to use their existing reader; there is no need to replace it.

Important information: When starting FreeStyle Libre® 2 Plus sensor with the FreeStyle Libre® 2 reader, users will not receive real-time glucose readings, even if they use the updated FreeStyle LibreLink® app as their second device. Users will need to scan to get their glucose reading on both devices. Glucose alarms are only received on the device used to start the sensor.

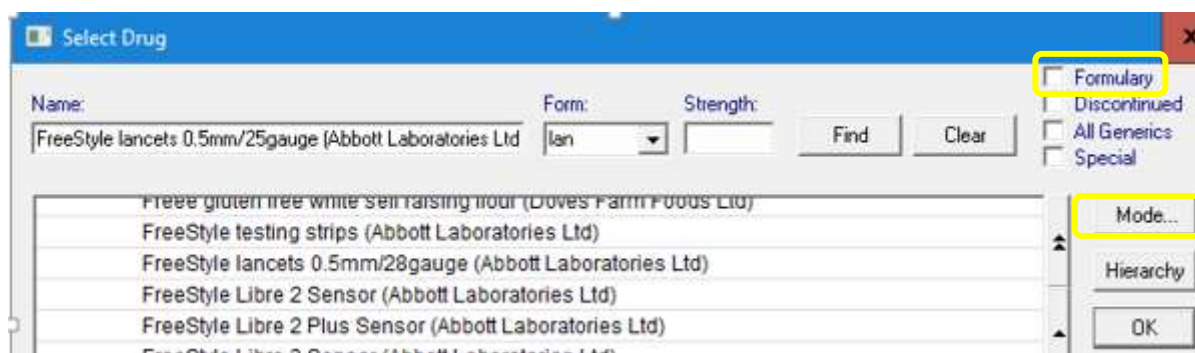
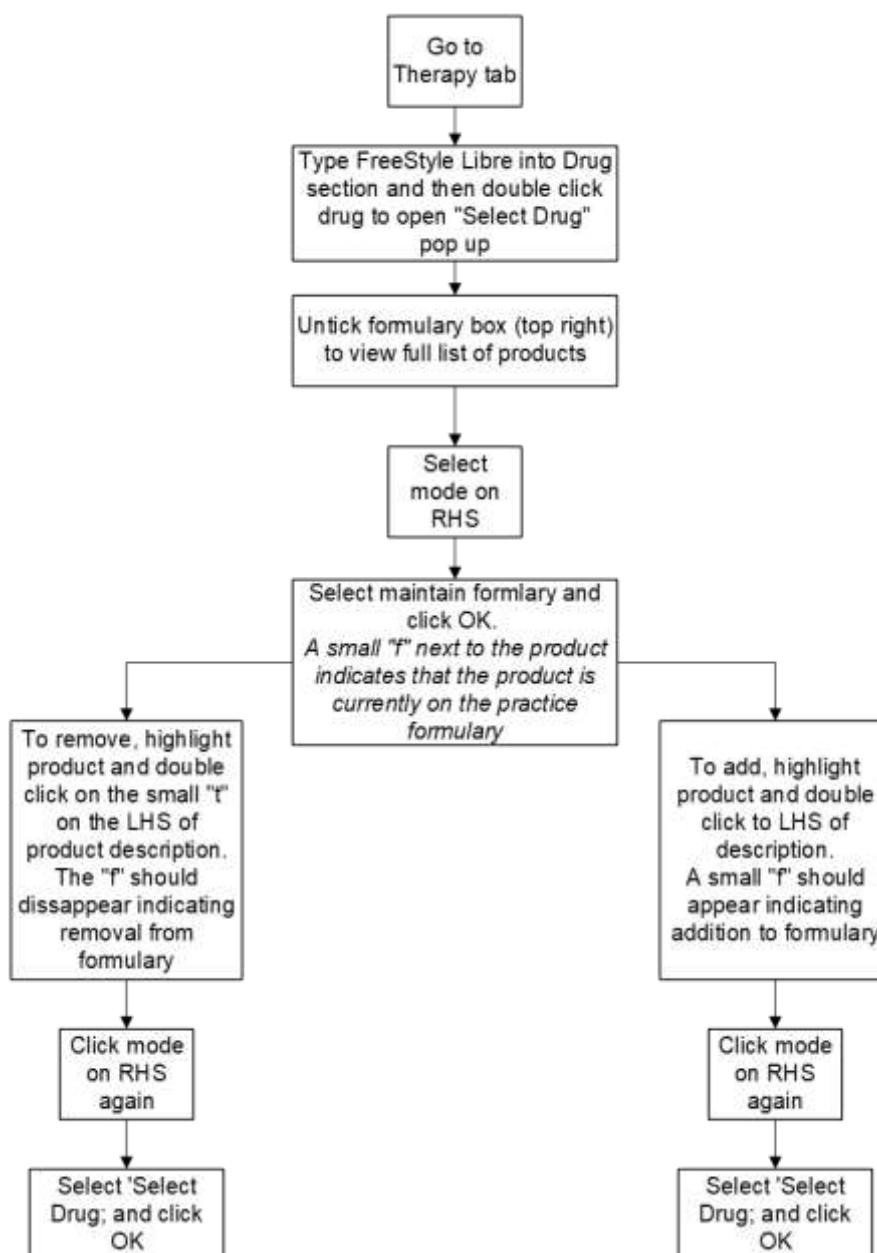
Where can I direct patients for further information?

- NHS Grampian Continuous Glucose Monitors (CGM) – Frequently asked questions for Patients/Carers at: https://www.nhsgrampian.org/globalassets/services/medicines-management/policies/state_cgm_appendix2.pdf
- Educational material for patients can be accessed at: <https://www.freestyle.abbott/uk-en/myfreestyle/myfreestyle.html>
- Product information can be found at: <https://www.freestyle.abbott/uk-en/home.html>
- User manuals: <https://www.diabetescare.abbott/support/manuals/uk.html>
- For additional support and troubleshooting, patients should contact the Customer Careline via <https://www.freestyle.abbott/uk-en/support/contact.html> or by calling 0800 170 1177 (08:00 – 20:00 Mon – Fri, 09:00 – 17:00 Sat excl. bank holidays)

Appendix 2

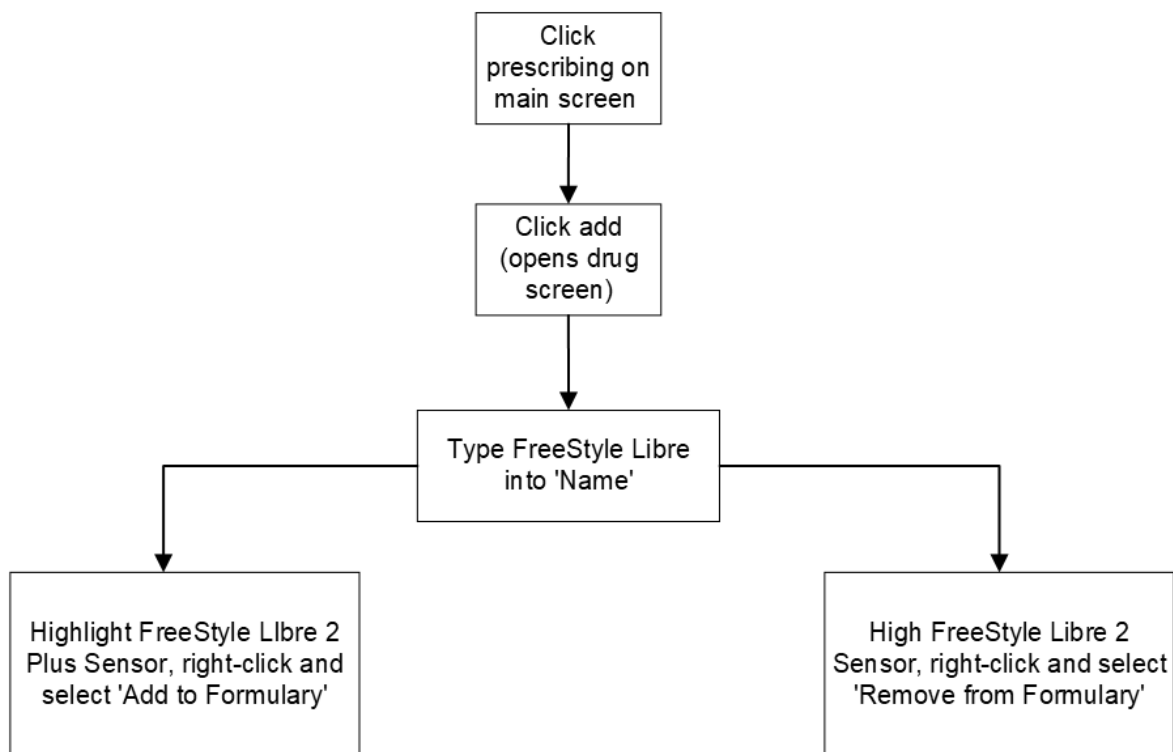
Healthcare Teams – Updating practice based formularies

VISION



Healthcare Teams – Updating practice based formularies

EMIS



Add Drugs [X]

Problem Titles: NOT LINKED Authorised By: [REDACTED]

Name: FREESTYLE

Dosage: []

Day/Qty: []

Rx Type: []

Duration: [] Rx Review: []

Re-Issues: [] Main Review: 17/10/2024 Urgent

Pack Description

Pack Size	Price
1 kit	£35.00

Options Formulary: GRAMPIAN 08-11

Warnings & Status Preparations Drug Details

Items Found : 8

	Status
A Freestyle Libre 2 Sensor	P
B Freestyle Optium Test strips	P
C Freestyle Lancets 0.5 mm/28 gauge	P
D Freestyle Optium B-Ketone Test strips 70784-35	P
E Freestyle Libre 2 Plus Sensor	P
F Freestyle Blood Glucose Test strips	P
G Freestyle Lite Test strips	P
H Freestyle Libre 3 Sensor	P

Clear G/T Switch BNF Data Next Issue & Print Issue Cancel

Appendix 3

Patient Information Sheet - Change of prescription from FreeStyle Libre[®] 2 sensor to FreeStyle Libre[®] 2 Plus sensor

Your continuous glucose monitor (CGM) prescription is changing from FreeStyle Libre[®] 2 sensors to FreeStyle Libre[®] 2 **Plus** sensors.

This is because Abbott has introduced FreeStyle Libre[®] 2 **Plus** sensors and will no longer be supplying FreeStyle Libre[®] 2 sensors. This is a company decision, as they continue to develop their sensor technology.

What you need to do?

- Use any FreeStyle Libre[®] 2 sensors you have until your supplies are finished. This will make sure we don't waste any NHS resources.

When you are ready to start using the FreeStyle Libre[®] 2 Plus sensors:

- Apply the FreeStyle Libre[®] 2 Plus sensors for 15 days. These sensors are effective for one day longer than the FreeStyle Libre[®] 2 sensors.
- Keep using your current FreeStyle LibreLink[®] app or the FreeStyle Libre[®] 2 reader. These work with your new sensor. You do not need to update the app or change your reader.
- If you have any questions about your new sensor, or other aspects of your diabetes care, please speak to your diabetes nurse or specialist team.

What is the difference between the FreeStyle Libre[®] 2 sensor and the FreeStyle Libre[®] 2 Plus sensor?

- Longer use: Each FreeStyle Libre[®] 2 Plus sensor should be worn for 15 days (versus 14 days with FreeStyle Libre[®] 2).

This information has been produced by the NHS Grampian Medicines Management Team following engagement with the diabetes specialist service